



MIZZOU GPC SECOND ANNUAL INTERDISCIPLINARY CASE COMPETITION



**UNIVERSITY OF MISSOURI
CAMPUS TRANSPORTATION
INITIATIVE**

JANUARY 22 - 23, 2025



GPC EXECUTIVE BOARD 24/25



JESSICA OSAZE
President



TEJA TEPPALA
Vice President



ANGELA DANSO GYANE
Secretary



ONYEDIKA ANI
Treasurer



DAMILOLA ODULOWU
Director of Communication



**EJIKE VALENTINE
IWEHA**
Director of Programming



FELIX OGUCHE
Director of Professional
Development



UMANDA ABEYSINGHE
Director of National Affairs



LUCAS REED
Director of State Affairs

PROGRAM OF EVENTS

12:00 – 12:03	Welcome and Introduction by the Master of Ceremonies (MC)
12:03 – 12:08	Welcome, Acknowledgments, and Recognition of Sponsors Brief Overview of the Competition Rules and Format (Felix Michael Oguche)
12:08 – 12:10	Introduction of Each Finalist Team
12:10 – 12:30	Team Radar Presentation
12:30 – 12:40	Q&A Session for Team Radar
12:40 – 1:00	Team Dash me and go Presentation
1:00 – 1:10	Q&A Session for Team Dash me and go
1:10 – 1:20	Dean Hart's keynote address
1:20 – 1:40	Team BioBengals Presentation
1:40 – 1:50	Q&A Session for Team BioBengals
1:50 – 2:10	Team Pathfinders Presentation
2:10 – 2:20	Q&A Session for Team Pathfinders
2:20 – 2:40	Team Zougo Presentation
2:40 – 2:50	Q&A Session for Team Zougo
2:50 – 3:10	Judges Deliberation
3:10 – 3:20	Chief Judge Comments
3:20 – 3:30	Announcement of Competition Winners
3:30 – 3:35	Closing Remarks



GPC GUESTS & JUDGES

GUEST SPEAKER



JENI HART, PHD (SHE/HER/HERS)

Dean of graduate school, Vice provost of graduate studies
Professor of higher education, elpa

MASTER OF CEREMONY



ANDREA L. KIMURA, M.ED., CHES

Student Health & Well-Being
Wellness Reso

PRELIMINARY JUDGES

SUE BOREN, PHD, MHA, FACMI, FAMIA

Professor
Master of Health Administration (MHA) Program Director
Department of Health Sciences



DAVID MOXLEY, MLS

Associate Director,
MHA Executive Program
Clinical Instructor
Health Sciences



ANDREA L. KIMURA, M.ED., CHES

Student Health & Well-Being
Wellness Reso



AUDRA JENKINS , PHD

Career Coach
Graduate Student Career Development
MU Career Center | MU Graduate School



RAYMOND CECORA

Operation Manager Parking and
Transportation department
University of Missouri



LINDA TURNER

Associate Director, Business
Administration
University of Missouri



ANDREA JACKSON

Gaines/Oldham Black Culture Center &
Multicultural Center, Assistant Director



FINAL JUDGES



JOSHUA IGNAGNI - CHIEF JUDGE

Director of Parking &
Transportation
University of Missouri



DALE FITCH PHD, MSW

Associate Professor
School of Social Work



LAURA ROESCH, PHD (SHE/HER)

Career Coach - Graduate Student
Career Services
MU Career Center | MU Graduate School



CHRISTOPHER JEFFERSON

Director, Fraternity and Sorority Life
2500 MU Student Center

USHERS

- Sabin Dahal
- Faith Shahale
- Kritika Prasai
- Stephen Rector
- Victor Agbajelola



GPC INTERDISCIPLINARY CASE COMMITTEE



FELIX OGUCHE
Chairman



MATTEO TOTIME
Asst. Chairman



MEGAN HIRNI
Member



**VICTOR
AGBAJELOLA**
Member



SABIN DAHAL
Member



KRIKA PRASAI
Member



**DAMILOLA
ODUOLOWU**
Member



STEPHEN RECTOR
Member

FELIX MICHAEL OGUCHE

Director of Professional Development, Graduate Professional Council (GPC)

Felix Michael Oguche is a doctoral student in Biological Engineering at the University of Missouri, where he is advancing research in ergonomic tool design and precision agriculture. Felix holds a Master's degree in Agricultural Environmental Management Engineering from the University of Debrecen, Hungary, and a Bachelor's degree in Agricultural and Bioresources Engineering from the Federal University of Technology, Minna, Nigeria.

With a passion for fostering professional growth, Felix has a proven track record in event coordination, program development, and student engagement. As this year's Director of Professional Development, Felix is the driving force behind the Mizzou GPC Second Annual Interdisciplinary Case Competition. He is dedicated to creating a dynamic platform for graduate and professional students to collaborate across disciplines, tackle real-world challenges, and showcase innovative solutions.

Felix's visionary leadership builds on his extensive expertise in research, professional development, and mentoring. His work goes beyond traditional academic pursuits, promoting interdisciplinary collaboration and critical thinking to address pressing issues in the community. His commitment to empowering Mizzou students is evident in his efforts to make this year's competition a transformative experience for participants, sponsors, and judges alike.

By fostering innovation, collaboration, and inclusivity, Felix aims to create an impactful competition that not only challenges participants but also strengthens the Graduate Professional Council's mission to enhance the student experience at Mizzou

WELCOME, ACKNOWLEDGMENTS, AND RECOGNITION OF SPONSORS

Good afternoon, everyone,

Welcome to the **Final Presentation of the Second Annual Mizzou GPC Interdisciplinary Case Competition**, focusing on the **University of Missouri Campus Parking and Transportation Initiative**. Congratulations to the **five finalist teams** who have made it this far—your hard work, creativity, and dedication have brought you to this exciting stage.

Before we proceed, I'd like to take a moment to recognize **Jessica Osaze**, the visionary behind this competition. As the initiator of the Mizzou GPC Interdisciplinary Case Competition, Jessica's idea has grown into a flagship event that brings together graduate and professional students from diverse fields to tackle real-world challenges.

A heartfelt thank-you to our trainers for their outstanding efforts in preparing our participants. Their expertise and guidance during the training sessions have equipped our teams with the tools and confidence to excel in this competition.

We also express our deepest gratitude to our sponsors:

- The **Graduate School** and **Parking and Transportation Department**, whose support has been instrumental, including sponsoring the **First Position Prize Money**.
- The **Center for Entrepreneurship and Innovation (CEI)** provides essential resources and space for training and preparation.

Additionally, I'd like to thank our **preliminary judges**, who helped select today's finalists. Your thoughtful evaluations yesterday set the stage for today's grand finale.

A special acknowledgment goes to our **final judges**, including the **Chief Judge**, for dedicating their time to carefully assessing the innovative solutions presented today.

Finally, none of this would be possible without the dedication of the **GPC Executive Team**, the **Professional Development Committee**, and our amazing volunteers, including the **ushers, timekeepers, and decorators**.

Overview of the Final Presentation

Today, our **five finalist teams** will present their solutions. Here's how it will proceed:

1. **Presentation Structure:** Each team will have **[20 minutes]** to present their ideas, followed by **[10 minutes]** of Q&A from the judges.
2. **Evaluation:** Judges will evaluate presentations based on creativity, feasibility, teamwork, and alignment with the competition's objectives.
3. **Award Announcement:** After the presentations, the judges will deliberate and announce the winning team, who will receive the **First Position Prize Money**.

This competition has been a testament to the incredible talent and determination within the University of Missouri. Thank you all for your participation and support, and let's celebrate the creativity and collaboration of our graduate and professional student community.

Good luck to our finalists, and let's get started!

WELCOME

The Graduate Professional Council (GPC) warmly welcomes you to the second annual Mizzou GPC Interdisciplinary Case Competition! This event challenges students to address a real-world issue and contribute innovative solutions to enhance the University of Missouri campus experience. We are excited to see how your creativity and collaboration will make an impact.

COMPETITION THEME

University of Missouri Campus Transportation Initiative
This year's case focuses on developing innovative strategies to enhance campus mobility, safety, and sustainability by integrating autonomous vehicles, e-scooters, and bikes into a multimodal transportation network.

COMPETITION RULES

1. Participants must not share proprietary or sensitive information with anyone outside of the competition.
2. All work must be original, with teams conducting their own research and analysis.
3. Direct communication with the MU Parking & Transportation team outside of the Info Session is prohibited.
4. Teams may use publicly available data to develop their solutions.
5. The goal is to foster critical thinking, collaboration, and creativity.

PRESENTATION MATERIALS

1. Executive Summary: A one-page document outlining your team's findings, strategies, and recommendations.
2. Final Presentation: A 20-minute PowerPoint presentation detailing analysis, solutions, and implementation strategies.
3. Marketing Materials: Flyers, posters, or email templates supporting your recommendations.
4. "Leave Behind" Handout: A summary document for judges with key insights and team information.

PROGRAM SCHEDULE

- Info Session: January 14, 2025 (Virtual via Zoom)
- Teams can interact with MU Parking & Transportation representatives to ask case-related questions.
- Preliminary Presentations and Networking Dinner: January 22, 2025, 1:00 PM – 6:00 PM, Neff Hall, Room 204
- Final Presentations: January 23, 2025, 12:00 PM – 3:00 PM, Neff Hall, Room 204

JUDGES AND MENTORS

- Chief Judge: Chief Judge Joshua Ignagni (Director, MU Parking & Transportation)
- Judges Panel: Judges from MU Parking & Transportation team and other Judges.

Team Name	Team Leader	Team Member 1	Team Member 2	Team Member 3
Spartans	Sumit	Abeysinghe Mudiyansele	Balakrishna	Malinda
Fulbright Girls	Rafia Unar	Marieme	N/A	N/A
Draveedians	Parth Jahagirdar	Ajay Kumar	N/A	N/A
BioBengals	Nur E Tasnova Habib	Apaala Basak	N/A	N/A
HELM	Samuel Leung	Jamie Hammond	Katie Taaffe	N/A
ZouGo	Erandika de Silva	Mohamed Abousetit	Malika Sharma	Norie Buena
RADAR	Rishabh Mahendra	Anandu Nair Gopakumar	Diana Firsova	Atif Bashir
Neural Nexus	Khurram Khalil	Shahbaz Paramban	N/A	N/A
Case Strategists	Bekzod Panjiev	Marina Porto	N/A	N/A
Pathfinders	Muturi Tanner	Anneliese Jakisa	N/A	N/A
Dash Me and Go	Sparjan	Feyisayo Akande	Moussa Theodore	N/A

CASE MEMBERS

RISHABH MAHENDRA

 www.linkedin.com/in/rishabhmahendra



Rishabh is currently pursuing a Ph.D. in agricultural and applied economics at the Division of Applied Social Sciences. He is working on developing a novel organizational structure for the conservation and restoration of ecosystems. He has held various leadership positions at Mizzou, such as the Founder and President of Universities Fighting World Hunger-Mizzou (and currently its VP), the director of Deaton Scholars Program, the president of his department's Graduate Student Association, an at-large board member of the Student Affairs Assessment Board. One of the projects he is currently working on is establishing a Tiger Kitchen to help reduce food waste on campus and solve the issue of food security in Columbia. He has a strong interest in environmental economics, encompassing ecosystem services valuation techniques, collective action, cooperatives, climate change impact assessments, politics, and other developmental sectors.

What do I love about Mizzou:

He appreciates the supportive and inclusive atmosphere at Mizzou, which stands in stark contrast to the experiences his friends have shared about other universities. He believes Mizzou offers something for everyone, and with a little effort, you'll find exactly what you're looking for.

ANANDU NAIR GOPAKUMAR

 www.linkedin.com/in/ang95_



Anandu Nair Gopakumar is a PhD student at the University of Missouri, specializing in environmental engineering. His research focuses on understanding and addressing the critical issue of microplastic pollution, exploring its sources, impacts, and potential mitigation strategies. With a strong commitment to environmental sustainability, Anandu combines innovative techniques and interdisciplinary approaches to advance knowledge in this emerging field. His work aims to inform policies and practical solutions that reduce plastic pollution and its detrimental effects on ecosystems. Beyond his research, Anandu actively engages in academic and professional collaborations to promote awareness and action on environmental challenges.

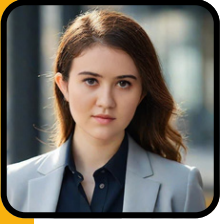
What do I love about Mizzou:

The research facilities at Mizzou are truly world-class, providing an excellent environment to explore innovative ideas and advance knowledge. The professors are incredibly welcoming, always ready to guide and support students in their academic and professional journeys.

CASE MEMBERS

DIANA FIRSOVA

 www.linkedin.com/in/diana-firsova-000baa342



Diana is a Master's student currently pursuing a degree in Public Affairs at the University of Missouri–Columbia. Having joined the program in the fall of 2024, she has chosen to focus on the public policy concentration, driven by her commitment to creating meaningful change in society. Diana is particularly interested in exploring how youth-oriented policies can serve as catalysts for improving various societal sectors. She is a strong advocate for the active involvement of young people in shaping key decisions within local governments, believing in their potential to contribute innovative and impactful solutions.

In addition to her focus on youth policy, Diana's research interests encompass public health and sustainability. She sees these areas as essential pillars for fostering thriving and equitable communities. Her work aims to integrate these domains, addressing complex societal challenges with an interdisciplinary approach.

What do I love about Mizzou:

Mizzou is, at its core, about people. It brings together students from around the globe, each a dedicated professional in their respective fields. The opportunity to exchange ideas, share experiences, and learn from one another is an invaluable aspect of the university.

ATIF BASHIR

 www.linkedin.com/in/atif-bashir-a2262aa8



Atif Bashir is a PhD student in Civil & Environmental Engineering at Mizzou, researching how microplastics move through stormwater systems and their environmental impact under different weather patterns. He is deeply interested in understanding and addressing the challenges posed by these emerging pollutants. Outside of academic work, Atif is passionate about sustainability initiatives and enjoys being part of projects that make a positive difference for the environment. He believes in practical, science-driven solutions that can lead to meaningful change. In free time, he explores ways to connect research with real-world applications, aiming to contribute to a cleaner and more sustainable future.

What do I love about Mizzou:

The best thing about Mizzou is the inclusive community, the campus is vibrant and peaceful with a mix of innovative opportunities and a mix of rich traditions that really enriched my experience here. The collaborative and supportive research environment is really instrumental.

CASE MEMBERS

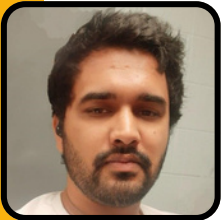


ANNELIESE JAKISA OWOR  www.linkedin.com/in/anneliese-jakisa-591093250

Anneliese Jakisa Owor is a first-year graduate student in Civil and Environmental Engineering. She is passionate about sustainable infrastructure and currently, her research is driven towards optimization of asphalt pavement performance using recyclable materials. Anneliese serves on the speakers committee of ACES (Alternative Career Exploration in the Sciences) and is a proud member of the Mizzou Institute of Transportation Engineering. She is also passionate about helping communities thrive and grow in all sectors of life.

What do I love about Mizzou:

I love the Mizzou spirit and the traditions including the Tiger Walk and Homecoming that foster a sense of pride and connection. The historic columns, botanical garden, and Francis Quadrangle are iconic and make the campus a serene place to study.



SUMIT SINGH SHEORAN  www.linkedin.com/in/sumit-singh-sheoran-2aa59720b

I am a third-year Ph.D. candidate in Biological Engineering, focusing on food process optimization and biopolymer applications. I received my M.S. in Food Process Engineering from IIT Kharagpur, India. My current research in Dr. Pavel Somavat's lab is focused on optimizing biopolymer-based processes to create novel and sustainable processing. My work combines analytical methodologies with process modelling to improve product functionality. I am dedicated to developing scalable solutions for sustainable food systems through transdisciplinary innovation.

What do I love about Mizzou:

Mizzou has given me with an excellent opportunity to explore my interests in biological engineering and sustainability research. I greatly appreciate Mizzou's commitment to multidisciplinary collaboration, which has allowed me to collaborate with professionals from several sectors while encouraging innovation and creativity. The cutting-edge facilities, such as powerful analytical labs and simulation tools, have helped me push the boundaries of my research into biopolymer-based product creation. Furthermore, Mizzou's lively and inclusive academic community, paired with its focus on relevant, real-world solutions, has encouraged me to aspire higher and make important contributions to society.

CASE MEMBERS



TANNER WAMBUI MUTURI [in www.linkedin.com/in/tanner-muturi-52326b113](https://www.linkedin.com/in/tanner-muturi-52326b113)

Hello everyone! My name is Tanner Wambui Muturi, and I am a PhD student from Kenya currently pursuing Civil Engineering with a focus on artificial intelligence in transportation. I am passionate about technology, and my research explores how AI and robotics can revolutionize civil engineering tasks. My ultimate dream is to establish a research company that not only develops innovative solutions but also deploys the cutting-edge ideas cultivated in my lab. It's an ambitious vision, but as St. Catherine of Siena once said, "Nothing great is ever achieved without much enduring." Outside academia, I enjoy immersing myself in biographies and Russian literature. I'm also an avid fan of anime, manhwa, and manga, which provide a creative escape and inspiration.

What do I love about Mizzou:

I love walking between the buildings on campus, their old and regal designs serve as a daily reminder that I am part of something historic. I often imagine the brave and revolutionary individuals who walked these halls before me, and their legacy inspires me to keep striving. I also deeply appreciate my department and professors, who are always willing to lend their support and guidance when challenges arise.



MOHAMED ABOUSETIT

[in www.linkedin.com/in/abousetit](https://www.linkedin.com/in/abousetit)

Meet Mohamed Abousetit, better known as State, a third-year PhD student in Physics at the University of Missouri, originally from Egypt. He combines his academic rigor with a passion for swimming and running, even having completed a marathon. State also creates "Mizzou Fri-yay" videos to engage graduate students on campus through funny questions, as part of the Graduate and Professional Council's Instagram content.

What do I love about Mizzou:

I love Mizzou for its vibrant community, the warm and welcoming vibes, and the endless activities that keep me engaged. I appreciate the beautiful city of Columbia, Missouri, and its wonderful weather that adds to the charm. The supportive environment and diverse opportunities make Mizzou truly feel like home to me, and I am grateful for the experiences it offers.

CASE MEMBERS



BEKZOD PANJIEV

I am a Fulbright scholar studying MPA. I am passionate about economic development and public policy. I have 5 years of experience in public sector. In my free time, I like exploring new cultures and cuisines.

What do I love about Mizzou:

I like welcoming communities and friendly atmosphere in Mizzou.



PORTO MARINA

 www.linkedin.com/in/luz-marina-porto-399115182

I am from Colombia and a proud recipient of the Fulbright Scholarship for Afro-descendant leaders, through which I am currently pursuing a master's degree in Public Affairs. I hold a bachelor's degree in Social Work and bring experience in both public and private sectors. My work has focused on implementing public policies related to elderly care and mental health. I am the founder and director of Tabalá Suetto, a nonprofit organization in Colombia dedicated to fostering social development and community empowerment.

What do I love about Mizzou:

The diversity, there are people from all around the world, so that makes Mizzou more inclusive and interesting. Additionally, I love the opportunities for students to develop their professional and leadership skills. Finally, the campus is beautiful, and it is my second home.



NORIEL BUENAÑO

 www.linkedin.com/in/norielbuenano

Noriel Buenaño is a third-year law student. He graduated law school in Panama and is now seeking to obtain his J.D. at the University of Missouri. He is interested in practicing in Intellectual Property as well as Immigration. Noriel serves as the Special Events Chair of the Hispanic Law Student Association and is one of the GPC Representatives of the Law School.

What do I love about Mizzou:

What I love about Mizzou is the community and how strong the sense of belonging is here.

CASE MEMBERS



MALIKA SHARMA

 www.linkedin.com/in/malika-sharmaa096

Malika Sharma is a second-year Ph.D. student in the Division of Biological Sciences, focusing on plant genetics and working in Dr. James Birchler's lab. Her project aims to elucidate the role of chromosomes in maize and develop a new plant regeneration technique. Malika's passion for studying plants stems from her extensive experience in the agricultural technology field prior to joining MU. She is committed to leveraging her scientific expertise to combat world hunger and address environmental challenges.

Malika serves as the president of Alternative Career Exploration in the Sciences (ACES), a student organization dedicated to exposing STEM students to career options outside academia. She is also an at-large member of Universities Fighting World Hunger (UFWH). Through these roles, she strives to strengthen her networking skills while supporting the growth of her peers and the broader community.

What do I love about Mizzou:

The collaborative spirit, friendliness, and openness of the people, as well as the opportunities for students to grow both personally and professionally.



ERANDIKA DE SILVA

I'm Erandika de Silva, but you can call me Erandi. I'm an occasional writer and a PhD student in the Department of English, and I'm currently working on my first creative nonfiction book. As a former member of the Kuppi Collective, I've published articles in *The Island* exploring education on the margins and social injustice through an interdisciplinary lens. Writing has always been a therapeutic outlet for me, and I also find joy and healing in drawing cartoons.

What do I love about Mizzou:

I love the breathtaking seasons that bring vibrant color to Mizzou, the wealth of resources available at Ellis Library, and the many student involvement opportunities that have helped me meet wonderful and giving people who I am incredibly grateful for.

CASE MEMBERS



**FEYISAYO PRISCILLA
AKANDE**

 www.linkedin.com/in/feyisayo-akande-243ab117a

Feyisayo Priscilla Akande is a PhD student at the University of Missouri-Columbia whose research focuses on evaluating current disease management practices on soybean pathogens through small plots and on-farm strip trials conducted in Missouri. Feyisayo earned her master's degree in Botany and Plant Pathology at Purdue University where she investigated the role of a PIEZO ion channel in plant defense and pattern-triggered immunity. She is the founder of a startup company called CILLABEL Ltd., an agri-food tech company in Nigeria. She started the company with the motive of helping farmers and those intending to enter agriculture achieve zero hunger (SDG 2). Feyisayo has a passion for science and research in agricultural development. She believes that bringing farmers closer to scientists and researchers will help transform agriculture and food security, thereby improving productivity.

What do I love about Mizzou:

I like the community



**NUR E TASNOVA
HABIB**

 www.linkedin.com/in/nur-e-tasnova-habib-6b743715a

I am Nur E Tasnova Habib, a Ph.D. student at the Department of Chemical and Biomedical Engineering. I am working on Electrical impedance-based biosensors, and my advisor is Dr. Shramik Sengupta. I earned a master's degree in biomedical engineering and a bachelor's degree in electrical and electronic engineering in Bangladesh. In addition to my work as a research and graduate teaching assistant, I am a trainee at the School of Medicine's NIH/NIA-funded Biomedical Entrepreneurship Training for Aging (BETA) program. I am also an Executive member of the College of Engineering Graduate Student Association (CEGSA). Along with my extracurricular interests, I am actively involved in cultural performances and sports.

What do I love about Mizzou:

Why I love Mizzou: Mizzou is an R1 public university known for its excellent collaboration among labs and professors, as well as its well-organized courses. Beyond academics, I deeply appreciate Mizzou for its student-centered approach. The university fosters numerous student organizations and actively supports them through funding, encouraging students to participate in various activities and events. Mizzou is dedicated to enhancing these opportunities, hosting career fairs, and prioritizing student welfare. Additionally, the university maintains strong connections with its alumni network. I also appreciate the infrastructure, iconic columns, and well-designed furniture

CASE MEMBERS

APAALA BASAK

www.linkedin.com/in/apaala-basak-3038291a4



Biography: Apaala Basak is a PhD Candidate in Bioengineering at Mizzou. She is currently working under the mentorship of Dr. Shramik Sengupta and Dr. Teresa Lever, studying functional and disease neural circuits using optogenetic neuromodulation. Born and raised in Kolkata, India, Apaala joined Mizzou after graduating from MS in Applied Physics (Biophysics). Apart from being involved in multiple interdisciplinary research projects, presented at multiple conferences, Apaala has also been actively involved with student organizations both past and present such as President of the Missouri International Student Council, VP for Bioengineering Graduate Student Organizations, GPC Department Representative and Graduate Engineering Ambassador.

What do I love about Mizzou:

Why do I love Mizzou: I love Mizzou because of the diversity and inclusivity that the university provides. The vibrant campus community has enriched my academic and personal life, exposing me to a wide array of perspectives and experiences. Mizzou has helped me grow not just as a researcher, but also as a person. The supportive environment has encouraged me to step out of my comfort zone and embrace new challenges. Overall, my time at Mizzou has been transformative, shaping me into a more well-rounded and open-minded individual.

MOUSSA THEODORE YATTA

Program: PhD in Biological Engineering



What do I love about Mizzou:

"There are countless things I admire about Mizzou. The university provides abundant opportunities and funding for students to conduct impactful research and advance knowledge in their fields. The campus is safe and welcoming, fostering a sense of security for both personal and academic pursuits. Mizzou also offers exceptional personal development training programs at no cost, helping students grow professionally and personally. Additionally, the vibrant student associations and their social events promote meaningful connections, interdisciplinary collaboration, and a sense of community."

CASE MEMBERS

SPARJAN



Sparjan is currently pursuing a Master's in Health Informatics at the MU School of Medicine. In addition to his studies, he serves as a Graduate Assistant with the Multicultural Center in the Division of Student Affairs, where he leads and organizes the successful International Student Nights on campus, fostering a sense of belonging among international students at the University of Missouri. He is also the At-Large Representative for Graduate Students in the Graduate Professional Council of the University of Missouri. Outside of academics, Sparjan is a passionate musician and skilled guitarist, with a love for making new friends and playing sports. He is deeply committed to helping those in need. A food lover, he shares his cooking tips and recipes on his YouTube channel, encouraging others to try their hand at preparing delicious meals. Additionally, he offers valuable guidance and insights for students aspiring to pursue education abroad.

What do I love about Mizzou:

What I love about Mizzou is how it empowers individuals from all walks of life to embrace their unique potential, creating a transformative environment where students can thrive, collaborate, and make a lasting impact.

CLOSING REMARKS

Good afternoon, everyone,

As we conclude the **Second Annual Mizzou GPC Interdisciplinary Case Competition**, I want to express my heartfelt gratitude to all of you who made this event such a remarkable success.

First, congratulations to our **finalist teams** for your exceptional presentations today. Your creativity, dedication, and innovative solutions have been truly inspiring. Each of you has demonstrated the power of interdisciplinary collaboration to tackle real-world challenges, and you should be proud of what you've achieved.

To our judges—both preliminary and final—thank you for your time, expertise, and thoughtful evaluations. Your feedback has not only guided the teams but has also elevated the overall quality of this competition.

A special thank-you to **Jessica Osaze**, the initiator of the Mizzou GPC Interdisciplinary Case Competition, for her vision and dedication in creating this platform for graduate and professional students. Your leadership has paved the way for this annual tradition.

I also want to recognize the incredible contributions of our trainers, including **Dr. Sue Boren, Kimura Andrea, Renee Reed-Miller, and Jessica Osaze**, for equipping our participants with the skills and confidence to excel.

To our sponsors—the **Graduate School**, the **Parking and Transportation Department**, and the **Center for Entrepreneurship and Innovation (CEI)**—thank you for your unwavering support and for sponsoring the **First Position Prize Money**, which recognizes and rewards excellence and innovation.

This event wouldn't have been possible without the commitment and teamwork of the **GPC Executive Team**, the **Professional Development Committee**, and **our volunteers**, including the ushers, timekeepers, and decorators. Your efforts behind the scenes ensured that every detail was taken care of.

Finally, to everyone who participated, supported, or attended this event—thank you for believing in the power of collaboration and innovation. This competition isn't just about solving today's challenges; it's about fostering leadership, creativity, and a vision for a better future.

As we look ahead, I hope this competition has inspired you to continue thinking boldly, collaborating across disciplines, and striving for excellence in all that you do.

Thank you once again, and I look forward to seeing even greater things at next year's competition.

Warm regards,

Felix Michael Oguche

Director of Professional Development
Graduate Professional Council

GOODWILL MESSAGE



JENI HART (DEAN)

Participating in the GPC Second Annual Interdisciplinary Case Competition is a valuable opportunity to apply your knowledge and expertise, to enhance your critical thinking skills, and to collaborate with peers. This interdisciplinary challenge encourages participants from a broad range of disciplines and fields to think creatively and craft innovative solutions to real-world campus issues. I wish everyone the best of luck and hope your ideas are bold and solutions can make a difference to Mizzou.

DALE FITCH (ASSOCIATE PROFESSOR) SCHOOL OF SOCIAL WORK

Dear Innovators,
Your dedication to creating innovative campus transportation solutions is truly inspiring! Your hard work and creativity are paving the way for a more sustainable and efficient future. Remember, every challenge you face is an opportunity to learn and grow. Keep pushing boundaries, stay curious, and believe in your vision. The impact of your efforts will not only transform our campus, but also set an example for others to follow.



SUE BOREN, PHD, MHA, FACMI, FAMIA

Best of luck to all participants in the Mizzou GPC Second Annual Interdisciplinary Case Competition! Your creativity and collaboration in tackling real-world challenges inspire us all, and I am excited to witness the innovative ideas you bring to t

LAURA

Best of luck to all the participants! Your innovation, creativity, and dedication are admirable, and I look forward to hearing the unique solutions you've come up with together.
All the best.



GOODWILL MESSAGE

ANDREA L. KIMURA

Welcome to the Mizzou GPC Second Annual Interdisciplinary Case Competition! It is truly inspiring to see graduate and professional students from diverse disciplines come together to tackle real-world challenges with innovative solutions.

I had the privilege of serving as a judge last year and I can assure you that your unique perspectives and problem-solving skills will leave a lasting impact, not only on your peers in this competition but also on the University as a whole. This year, your focus on the Parking and Transportation Department is particularly timely, and I have no doubt that your creativity and collaboration will bring forward meaningful ideas to address this critical topic.

Thank you for your commitment, energy, and thoughtful insights. I encourage you to embrace the process, learn from one another, and let your passion for creating positive change shine out. The work you do here has the powerful potential to shape our community for the better and impact those coming behind you for years to come. Best of luck, and I look forward to seeing your brilliant ideas in action!

My warmest regards,



MOXLEY DAVID

“Congratulations on choosing to participate in the GPC Case Competition! Last year’s event was fun and rewarding. You’ll be glad you helped keep the new tradition alive.”

JOSHUA IGNAGNI DIRECTOR OF PARKING & TRANSPORTATION

Welcome to the Graduate Professional Council competition! At the University of Missouri, we are committed to fostering innovative ideas that enhance campus transportation while prioritizing sustainability, safety, and accessibility. Transportation is a critical component of campus life, impacting how students, faculty, and staff connect with one another and access vital resources. By addressing these challenges, you have the opportunity to create meaningful solutions that improve daily life and position Mizzou as a leader in mobility innovation. Thank you for your participation, and best of luck!



GOODWILL MESSAGES



AUDRA

I applaud your determined preparation for this case competition which will enhance your skills and acuity in addressing real-world challenges. Congratulations to all participants! Best.



HEATHER HOFFMAN

On behalf of the Graduate School, I would like to wish you the best of luck in the upcoming GPC Interdisciplinary Case Competition! I commend you for stepping outside your comfort zones and collaborating with peers across disciplines to enhance your communication and problem-solving skills. I hope you learn from one another and truly enjoy the experience. Best of luck!



JESSICA OSAIZE

The Graduate Professional Council (GPC) Annual Interdisciplinary Case Competition provides Mizzou Tigers an opportunity to meaningfully contribute to business matters that affect our entire community, helping shape our future through informed perspectives. We are delighted to see the success of this second annual competition, which focuses on developing creative and innovative transportation networks for our campus. This initiative demonstrates the value of incorporating student voices in decisions that impact our community.

I commend all participating student teams for dedicating their time and effort toward improving campus transportation, which affects the wellbeing of all students, faculty, and staff. We are grateful to the MU Department of Transportation for sharing their business model with our students. We also extend our continued appreciation to our past contributors, the MU Cashier's Office and the Trulaske College of Business, for their valuable support.

Special thanks to our preliminary and main judges for their participation, and to my GPC executive team, particularly Felix Oguche, Director of Professional Development, and his team for organizing this successful event.

GOODWILL MESSAGES



STEVE RECTOR

"Welcome to this year's case competition participants! I am looking forward to seeing your work and wish you all the best of luck!"

SABIN

"Good luck to all the brilliant minds competing in the second annual case competition! We can't wait to see your creativity and problem-solving skills in action, make it unforgettable!"



MEGAN HIRNI

Megan Hirni is a 3rd year grad student in the department of Statistics, Measurement and Evaluation in Education. Megan enjoys learning and living here in Columbia.



VICTOR AGBAJELOLA

This event provides you with a unique platform to showcase your skills, collaborate with brilliant minds, and tackle real-world challenges with innovative solutions.

We commend your dedication and enthusiasm and hope this experience inspires personal growth, professional connections, and creativity.



GOODWILL MESSAGES



MATTEO TOTIME - ASSISTANT DIRECTOR OF PROFESSIONAL DEVELOPMENT

Being part of the inaugural case competition brought me a profound sense of fulfillment. At first, I doubted whether I could do it, but eventually, I did—and my group placed second!

I know there are others who might feel the same doubts I did but remember: you've come this far for a reason. Believe in yourself and keep going!

Best of luck,

KRIKA

"Best wishes to all participants of the 2025 annual case competition! May your innovative ideas and determination lead you to success!!"



APPRECIATION

We extend our heartfelt gratitude to everyone who contributed to the success of this year's **Mizzou GPC Interdisciplinary Case Competition (MGPCICC)**, focusing on the **University of Missouri Campus Parking and Transportation Initiative**.

A special thanks to **Dr. Scott Christianson** for providing the space and thoughtful arrangements, including snacks, that fostered a productive and motivating environment. We are sincerely grateful for his invaluable contributions.

We are deeply grateful to **Dr. Sue Boren, Kimura Andrea, Renee Reed-Miller, and Jessica Osaze** for their outstanding efforts in training and preparing participants for the competition. Your dedication and expertise were instrumental in shaping the success of this event.

Our appreciation also extends to our preliminary judges, including **Dr. Sue Boren, David Moxley, Andrea Kimura, Dr. Audra Jenkins, Raymond Cecora, and Linda Turner**, for their expertise and guidance in shaping the competition. Their efforts were instrumental in preparing participants for this challenge.

We thank the final judges, **Chief Judge Joshua Ignagni, Dale Fitch, Andrea Kimura, and Laura Roesch**, for their thoughtful evaluations and feedback, which highlighted the hard work and creativity of our participants.

A big thank you to our **guest speaker, Dr. Jeni Hart**, for sharing your insights and setting the tone for this year's event. Your words were both inspiring and empowering.

We also want to recognize **Sophia Hassembler Rivera** for her valuable contributions to the training sessions, as well as the **GPC Executive Team** and the **Professional Development Committee members**, whose dedication and teamwork have been integral to this initiative's success.

Finally, we extend our sincere gratitude to the **Graduate School Parking and Transportation Department** for sponsoring the **First Position Prize Money**. Your support has been instrumental in rewarding innovation and excellence, and we truly appreciate your unwavering commitment to this initiative. and the **Center for Entrepreneurship and Innovation (CEI)** for their unwavering support, providing necessary resources and space that made the training sessions and competition a reality.

A special shout-out to **Dean Dr. Jeni Hart** and **Assistant Dean Dr. Heather Hoffman** for their exceptional guidance and leadership. Your support has been a beacon of encouragement and inspiration throughout this journey.

Thank you all for your commitment to fostering innovation, collaboration, and leadership within the graduate and professional student community. This year's competition was a testament to the power of collective effort and shared vision.

Felix Michael Oguche

*Director of Professional Development
Graduate Professional Council*

NOTES

NOTES

ACKNOWLEDGMENTS

WE EXTEND OUR GRATITUDE TO ALL SPONSORS, MENTORS, AND PARTICIPANTS WHO MADE THIS EVENT POSSIBLE. YOUR SUPPORT IS INVALUABLE IN FOSTERING COLLABORATION, INNOVATION, AND EXCELLENCE.

